



- Beautifully Presented Townhouse
- Modernised to a Tasterfull Standard
- No Onward Chain
- Four Double Bedrooms (3 En-suites)
- Large 31ft Lounge Diner with Open Fireplaces
- Modern Fitted Dining Kitchen with Granite Worktops
- Double Glazed Throughout, Oil Fired Central Heating
- Parking and Mature Pretty Garden

The Property

This beautiful Victorian mid terraced town house is a fine example of property. elegantly restored to a high standard whilst maintaining many of it character features. The well portioned accomodation is split over 3 floors providing super spacious family living space and large ensuite bedrooms providing plenty of space for growing families.

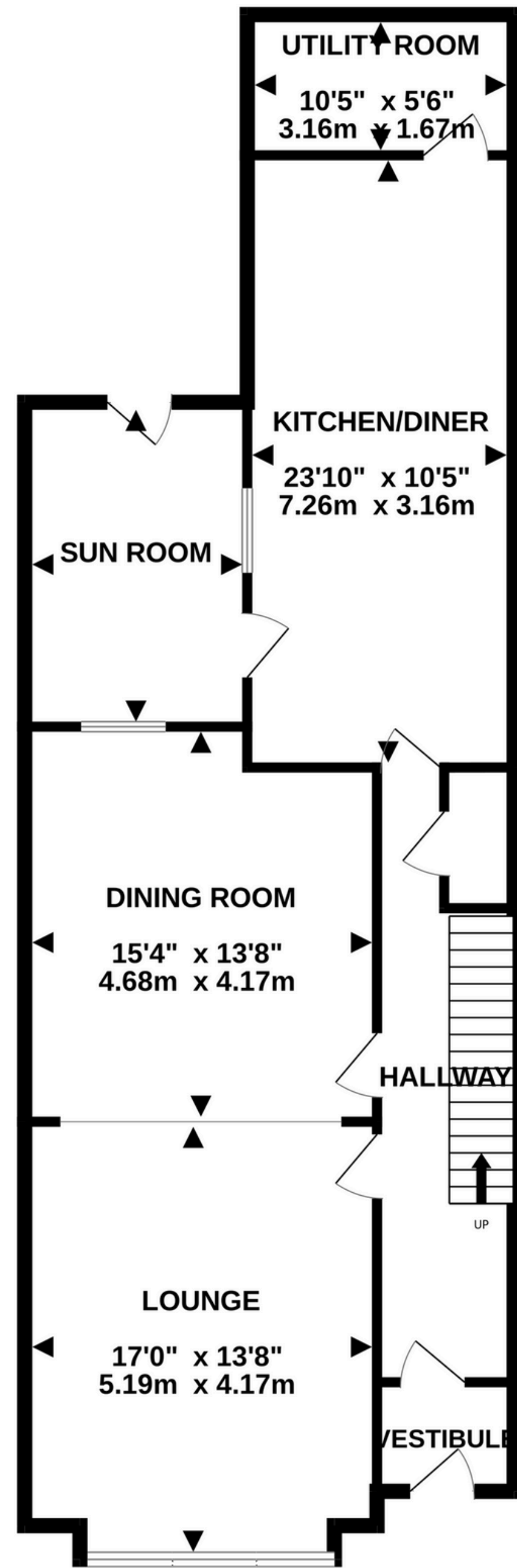
The property boasts a beautiful modern high spec kitchen with dining area, utility room and boot room, also benifitting from a large lounge with bay window and open fireplaces. The property benefits from allocated off road parking at the rear.

Location

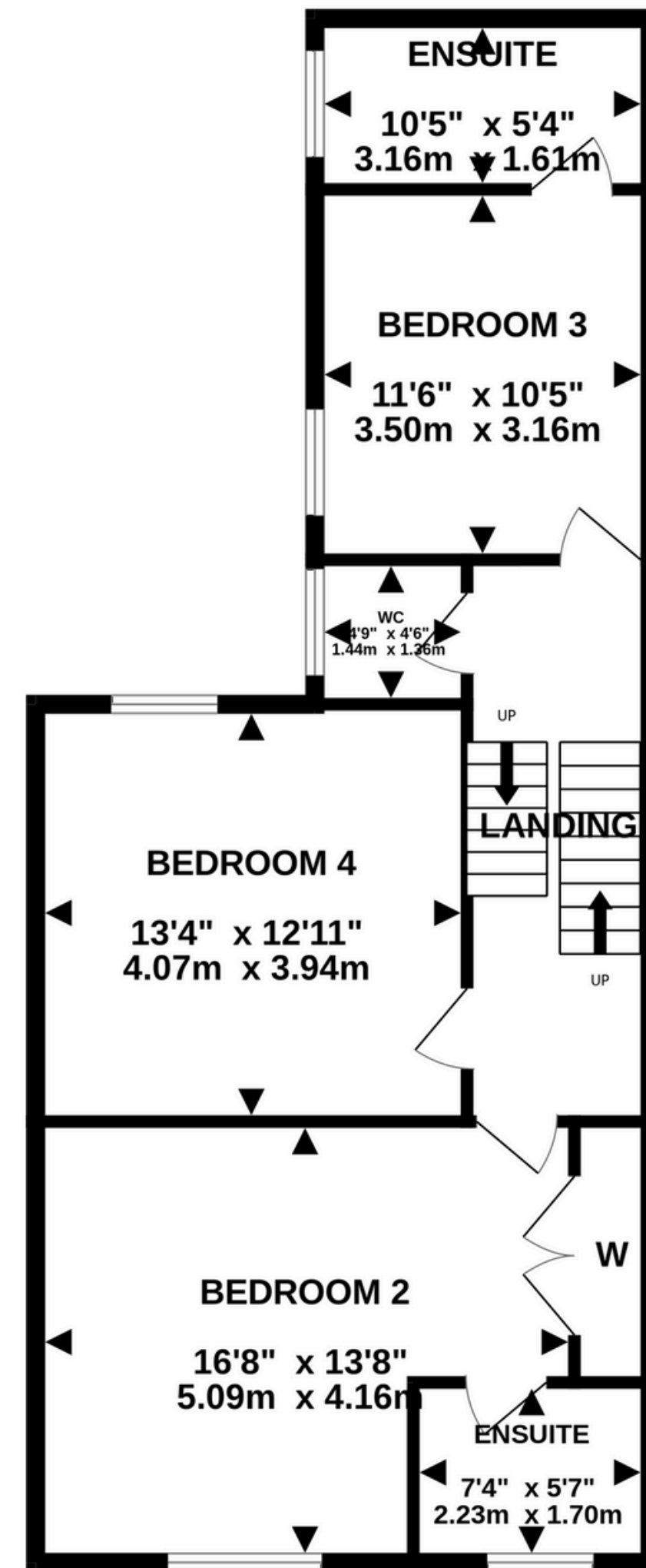
The Property is Situated in an extremely convenient location within a short distance from local shops, restaurants and amenities. Easy access to local primary schools and a short walk away from St. Ninians High School



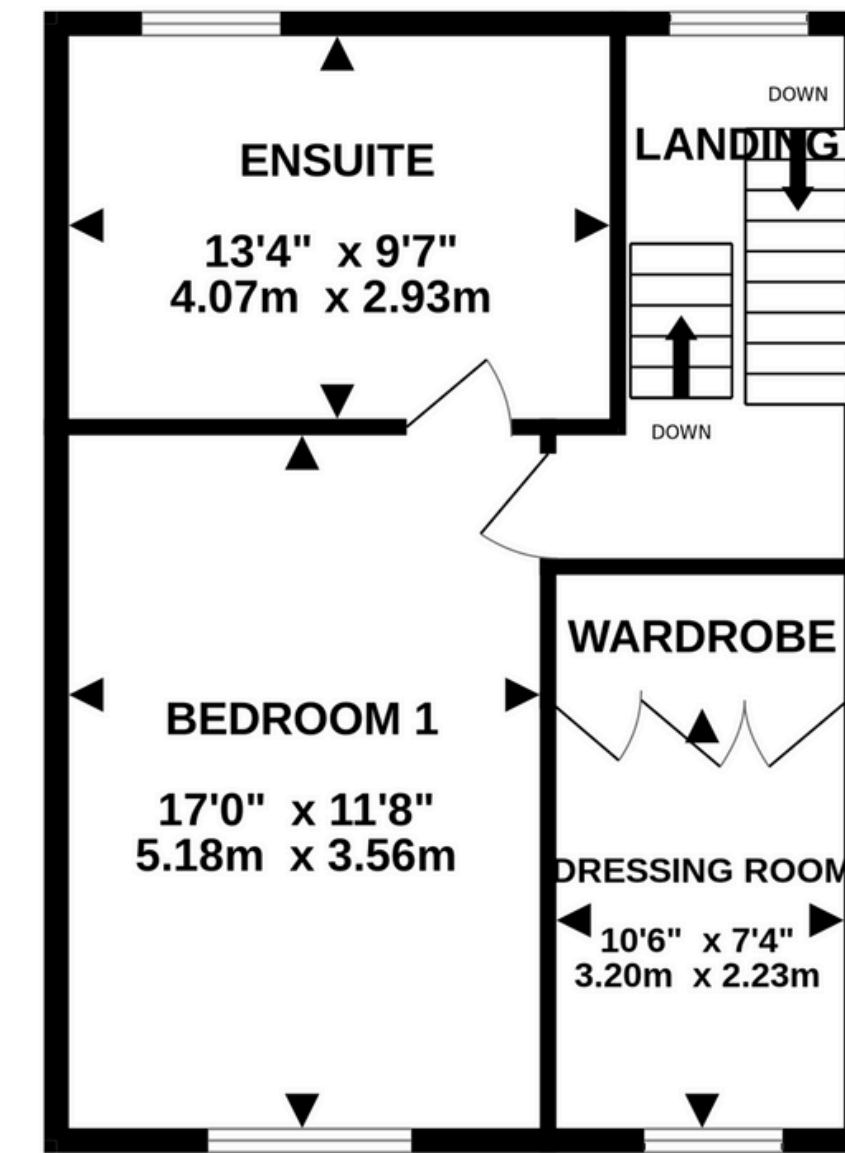
GROUND FLOOR
993 sq.ft. (92.3 sq.m.) approx.



1ST FLOOR
727 sq.ft. (67.5 sq.m.) approx.



2ND FLOOR
506 sq.ft. (47.0 sq.m.) approx.



TOTAL FLOOR AREA : 2226 sq.ft. (206.8 sq.m.) approx.

Whilst every attempt has been made to ensure the accuracy of the floorplan contained here, measurements of doors, windows, rooms and any other items are approximate and no responsibility is taken for any error, omission or mis-statement. This plan is for illustrative purposes only and should be used as such by any prospective purchaser. The services, systems and appliances shown have not been tested and no guarantee as to their operability or efficiency can be given.
Made with Metropix ©2025

Disclaimer: Whilst all particulars are believed to be correct, neither Property Wise Limited, or their clients guarantee their accuracy nor are they intended to form part of any contract. Floorplans are only for illustrative purposes only, decorative finishes, fixtures, fittings and furnishings do not represent the current state of the property. Measurements are approximate and not to scale.