

15 Albany Street, Douglas

Asking Price £299,950



Immaculately Presented Mid Terraced House
Situated in a Convenient Residential Location
Close to Local Schools, Shops, Town Centre and Amenities

Property Comprises:

Large Lounge

Dining Room

Breakfast Kitchen (with 2 Larder Cupboards)

5 Good Sized Bedrooms plus Study / Storeroom

4 Piece Modern Bathroom

Additional Separate WC

Large rear Courtyard / Low Maintenance Garden

Gas Fired Central Heating

Substantially Modern uPVC Double Glazed

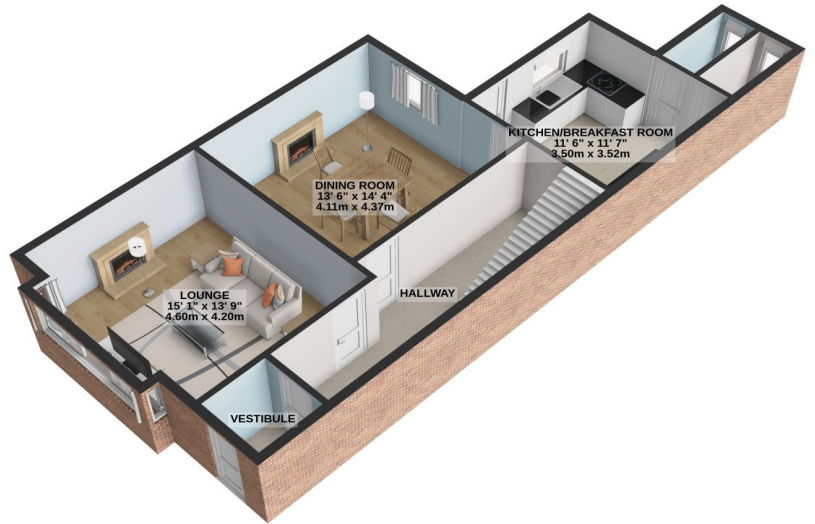
Viewings Highly Recommended

No Onward Chain

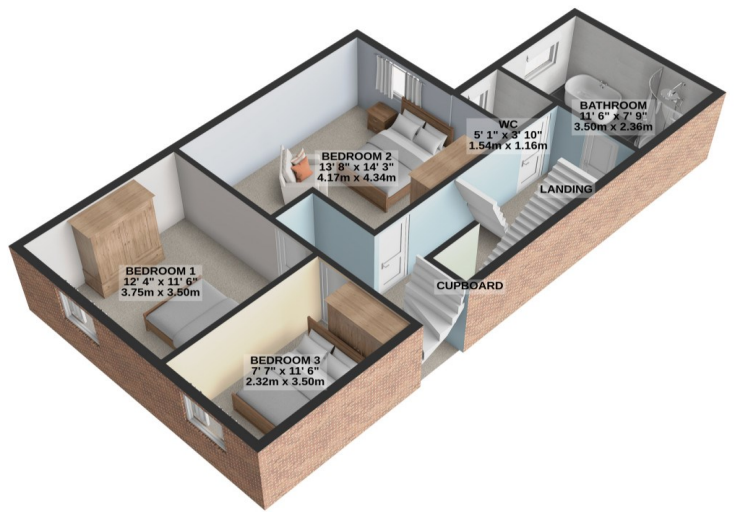
Directions: Travelling out of Douglas on to Buck Road, then on to Woodbourne Road, Immediately after Woodbourne House Turn left in to Albany Road then Immediately Left Again on to Albany Street Where the Property can be Easily Located on the Right Hand Side by our For Sale Board



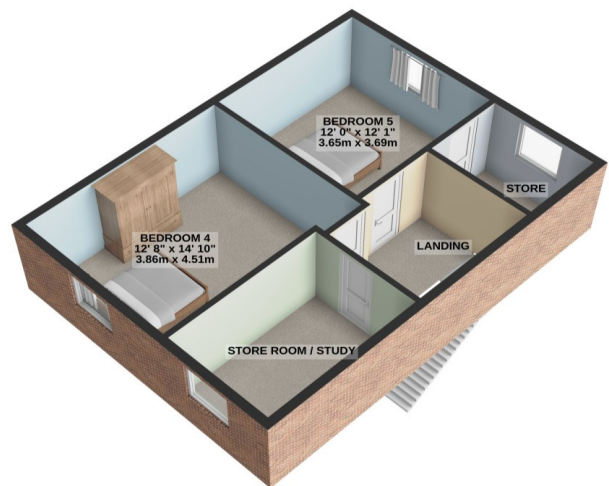
GROUND FLOOR
709 sq.ft. (65.9 sq.m.) approx.



1ST FLOOR
669 sq.ft. (62.2 sq.m.) approx.



2ND FLOOR
536 sq.ft. (49.8 sq.m.) approx.



TOTAL FLOOR AREA : 1915 sq.ft. (177.9 sq.m.) approx.

For illustrative purposes only. Decorative finishes, fixtures, fittings and furnishings do not represent the current state of the property. Measurements are approximate. Not to scale.
Made with Metropix © 2024

Property Wise Limited, First Floor, St. Georges Chambers,
1 Athol Street, Douglas, Isle of Man, IM1 1LD

Email: Info@propertywise.co.im