

**Thie Injit
Glashen Farm
Ballasalla
£1,800.00 PCM**



Stunning Modern Agricultural Bungalow Set In Large Gardens of 0.7 Acre With Spectacular Countryside Views, Close To Local Amenities

Close To Village Amenities With The Airport A 5 Minute Drive Away

Large Lounge With Log Burner

Modern Kitchen With Separate Dining Room

Large Sun Room With Patio Doors Leading To Paved Patio Area For The Summer Barbecues

Utility Room/Separate WC

3 Double Bedrooms & a Single Bedroom/Study, Family Bathroom

Separate Garage

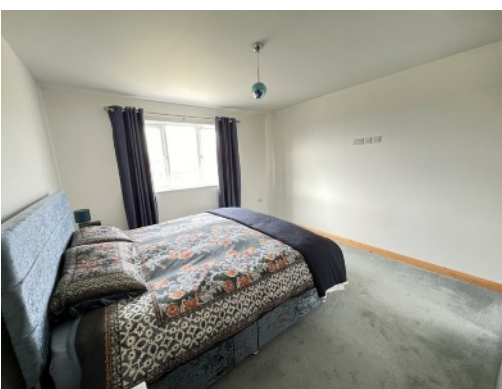
Oil Fired Central Heating With Under Floor Heating

Pets By Negotiation, NO SMOKERS

*****TENANTS SHOULD BE AWARE THAT THEY MEET PLANNING CONDITION C2 *****

"THE DWELLING MAY BE OCCUPIED ONLY BY A PERSON OR PERSONS ENGAGED OR LAST ENGAGED SOLELY IN AGRICULTURE; OR A WIDOW OR WIDOWER OF SUCH PERSON, OR ANY RESIDENT DEPENDANTS"

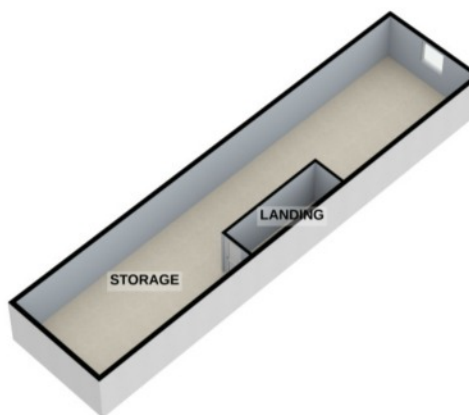
Directions: Proceeding from Ballasalla on the main Douglas Road, after leaving the 30mph zone take the first left farm entrance, Glashen Farm. Proceed about 100m down the farm road, and Thie Injit is on the left.



GROUND FLOOR
2132 sq.ft. (198.1 sq.m.) approx.



1ST FLOOR
730 sq.ft. (67.8 sq.m.) approx.



TOTAL FLOOR AREA : 2862 sq.ft. (265.9 sq.m.) approx.

For illustrative purposes only. Decorative finishes, fixtures, fittings and furnishings do not represent the current state of the property. Measurements are approximate. Not to scale.
Made with Metropix © 2020