



Apartment 2, Cronk Airh, Port St Mary £165,000



2 Bedroom Sea Front Apartment With Spectacular Uninterrupted Sea Views Situated In The Idyllic Village Of Port St Mary, Within Walking Distance To The Local Amenities Including Golf Course, Pubs, Restaurants, Harbour And Beach

Spacious Lounge/Diner With Large Feature Bay Window Enjoying Breathtaking Sea Views

2 Double Bedrooms

Family Bathroom Comprising Shower, Toilet & Wash Hand Basin

Fully Fitted Modern Cream Gloss Kitchen

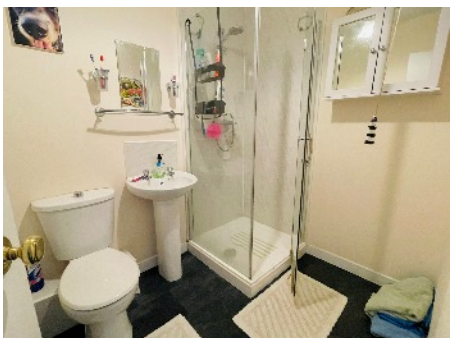
Gas Fired Central Heating, UPVC Double Glazed Windows

Management Company In Place, Remainder Of A 999 Year Lease

The Apartment is in need of refurbishment/repair and is ideal for a person looking for a beautifully set property with magnificent views

Directions: Travelling into Port St. Mary from the Four Roads Roundabout continue along Station Road, turn left onto the promenade where Cronk Airh can be found approximately three quarters of the way along the promenade on the left hand side.

Rates Payable - Contact The Rates Department on 658661



GROUND FLOOR
992 sq.ft. (92.2 sq.m.) approx.



TOTAL FLOOR AREA : 992 sq.ft. (92.2 sq.m.) approx.

For illustrative purposes only. Decorative finishes, fixtures, fittings and furnishings do not represent the current state of the property. Measurements are approximate. Not to scale.

Made with Metropix © 2023