

**Misselthwaite, Clayhead Road
Baldrine
Asking Price £749,950**



Substantial detached family home presented in immaculate condition throughout and enjoying breathtaking views towards Laxey Bay and the surrounding countryside. The Property has benefited from considerable updating and modernisation and is finished to an exacting standard. Situated in a highly desirable location on an elevated position within a generous plot and just a short distance from Douglas and Laxey.

Accommodation Comprises of:-

Outstanding Open Plan Entertaining Space Comprising of a Stunning Modern Quality Hand Built, Fully Fitted Kitchen with Hidden Pantry, Housing Top of the Range Appliances, Including City AGA Cooker Oven and Hotplate, Neff Oven and warming Drawer as well as Additional Neff Electric Halogen Hob. Lounge and Dining Area, with Patio Doors Leading out onto the Terrace to Take in and Enjoy the Superb Setting and Views Towards Laxey

- 5 Generous Bedrooms (Master with walk in wardrobe),
- 3 Beautifully Appointed Modern Bath/Shower Rooms
- Home Office with Spectacular Unspoiled Views
- Boiler Room with Access to Under House Storage Area

Substantial Garden With Patio Area. The Garden is Primarily Laid to Lawn with plenty of Mature Shrubs. Large Block Paved Driveway Parking for 6 + Cars and Potential to Build a Double Garage (with Previous Planning Consent)

“Viewing’s Highly Recommended!”

Rateable value: tbc Rates payable: tbc (Inc Water Rates)

Services: All Mains Services Connected

Inclusions: TBC

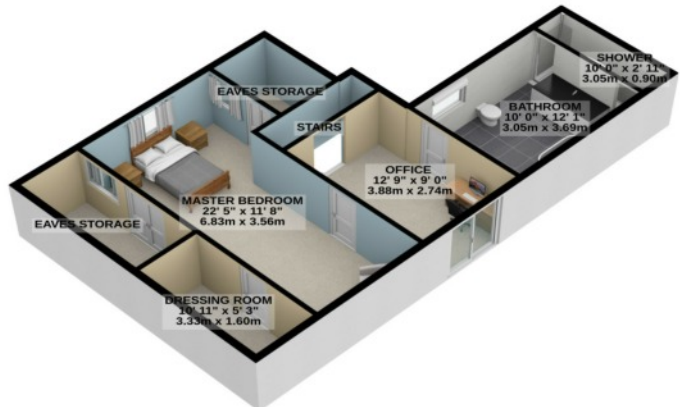
LOWER GROUND FLOOR
1025 sq.ft. (95.2 sq.m.) approx.



GROUND FLOOR
1029 sq.ft. (95.6 sq.m.) approx.

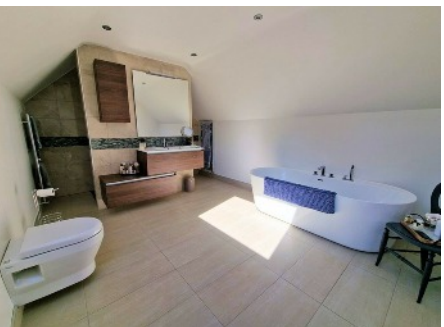
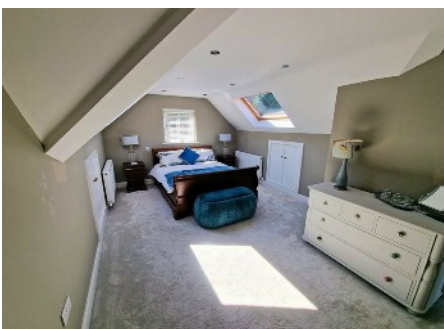


1ST FLOOR
668 sq.ft. (62.0 sq.m.) approx.



TOTAL FLOOR AREA : 2722 sq.ft. (252.9 sq.m.) approx.

For illustrative purposes only. Decorative finishes, fixtures, fittings and furnishings do not represent the current state of the property. Measurements are approximate. Not to scale. Made with Metropix © 2022



Whilst all particulars are believed to be correct, neither Property Wise Limited, or their clients guarantee their accuracy nor are they intended to form part of any contract. Floorplans are for illustrative purposes only, decorative finishes, fixtures, fittings and furnishings do not represent the current state of the property. Measurements are approximate and not to scale.