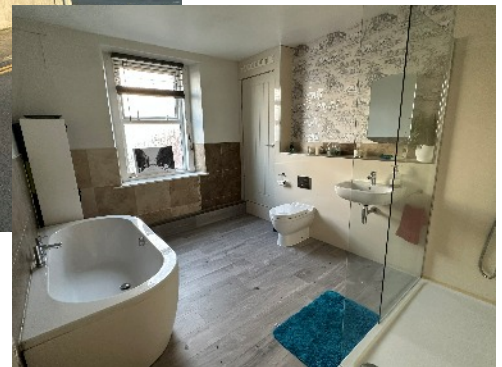




**23 Mona Street
Peel
£289,950**



**4 Bedroom Town House Situated In The Heart of Peel
Split Over 3 Floors, Providing Good Family Living Space
Close to All Shops, Schools And Bus Services**

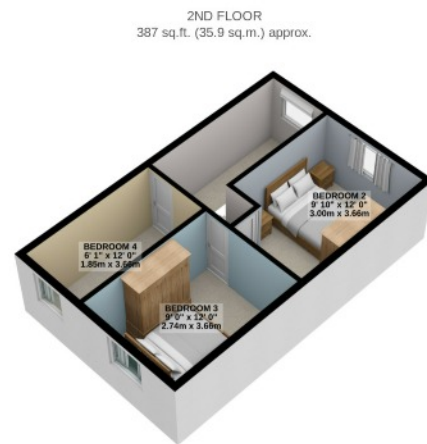
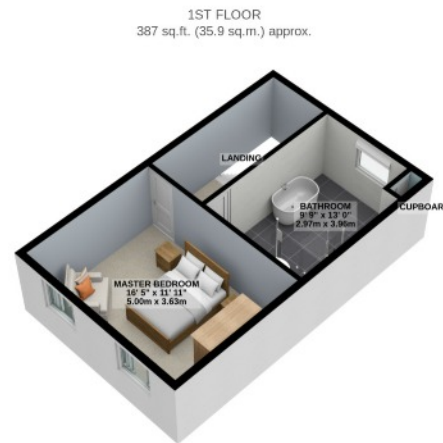
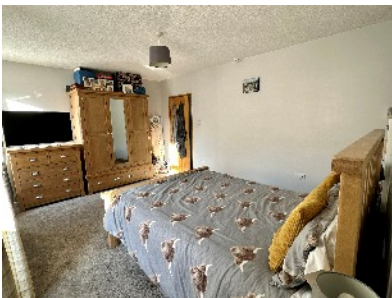
Accommodation Comprises:-

Entrance Hall, Lovely Sunny Lounge To The Front
Large Modern Kitchen With Electric Hob, Double Oven and Dishwasher And Also
Boasting Innovative Cupboard Space
Small Utility Room Out to Enclosed Rear Yard And 3 Useable Sheds
The First Floor has A Spacious Modern Bathroom With Bath And Shower Unit,
And A Good Sized Master Bedroom
The Second Floor Boasts 3 Further Bedrooms
Parking Outside or Parking Permit For Car Park Opposite
Gas Fired Central Heating
Recently Re-Plumbed And Re-Wired With Extensive Plastering Work Also Done

Viewings Highly Recommended

Directions : Travelling into Peel From Douglas, Turn Right At The Crossroads After QE11 High School. At The Stop Sign With The Police Station on Your Right Turn Left Past The Cathedral Down To The Stop Sign. Almost do a U Turn To The Right In Front Of Black Grace Cowley And Mona Street Can Be Found On The Right About 100 Yards Up The Road, Just before Church Street.

Rates : TBA



TOTAL FLOOR AREA : 1221 sq.ft. (113.4 sq.m.) approx.

For illustrative purposes only. Decorative finishes, fixtures, fittings and furnishings do not represent the current state of the property. Measurements are approximate. Not to scale. Made with Metropix © 2023

Whilst all particulars are believed to be correct, neither Property Wise Limited, or their clients guarantee their accuracy nor are they intended to form part of any contract. Floorplans are for illustrative purposes only, decorative finishes, fixtures, fittings and furnishings do not represent the current state of the property. Measurements are approximate and not to scale.