



**15 Birch Drive
Ballawattleworth, Peel
£339,500**



**A Well Presented End Terrace, 3 Bedroom Extended Modern House
Situated At The End Of a Quiet Cul-de-Sac In A Popular Location
Close To All Of Peels Local Amenities, Schools and Bus Routes**

Accommodation Comprises:-

Entrance Hall and Cloakroom With Tiled Floor

Good Sized Modern Kitchen/Diner With Tiled Floor

With Built In Fridge/Freezer, Electric Oven and Hob

Spacious Airy Lounge with Leads Into a Large Sun Room That
Looks Out Onto a Substantial Garden, Patio and a Lovely Decked Area

Fully Tiled Modern Bathroom

2 Double Bedrooms

Further Large Single

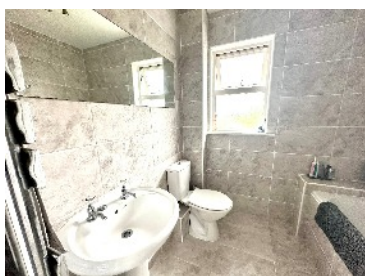
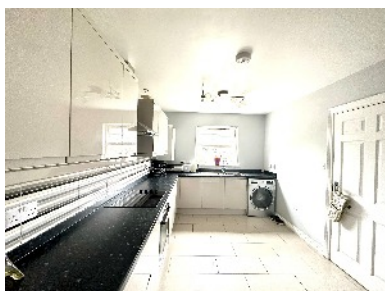
Gas Fired Central Heating

Ample Off Road Parking

Viewing Highly Recommended

Directions : Travelling Through Peel Past Shoprite and Peel Clothworkers towards the Poortown Road Turn Left at the 2nd Roundabout in front of The Highwayman onto Oak Road. Continue Up Oak Road and Birch Drive is the turning on the Right once you have passed Rowan Avenue on your left.

Rates : TBA



TOTAL FLOOR AREA : 1059 sq.ft. (98.4 sq.m.) approx.

For illustrative purposes only. Decorative finishes, fixtures, fittings and furnishings do not represent the current state of the property. Measurements are approximate. Not to scale. Made with Metropix © 2023

Whilst all particulars are believed to be correct, neither Property Wise Limited, or their clients guarantee their accuracy nor are they intended to form part of any contract. Floorplans are for illustrative purposes only, decorative finishes, fixtures, fittings and furnishings do not represent the current state of the property. Measurements are approximate and not to scale.