



**Plot 1 & 2 May Hill
Ramsey
£399,950**



**New Build Victorian Style 3 Storey End Terrace Townhouse In A Small
Bespoke Development**

**Close To All Local Amenities, Bus Stop, Shops, Schools, Restaurants
Open Plan Lounge With Double Doors Leading Into The Kitchen/Diner**

4 Good Size Double Bedrooms

2 Modern Bathrooms

Downstairs WC

Gas Fired Central Heating

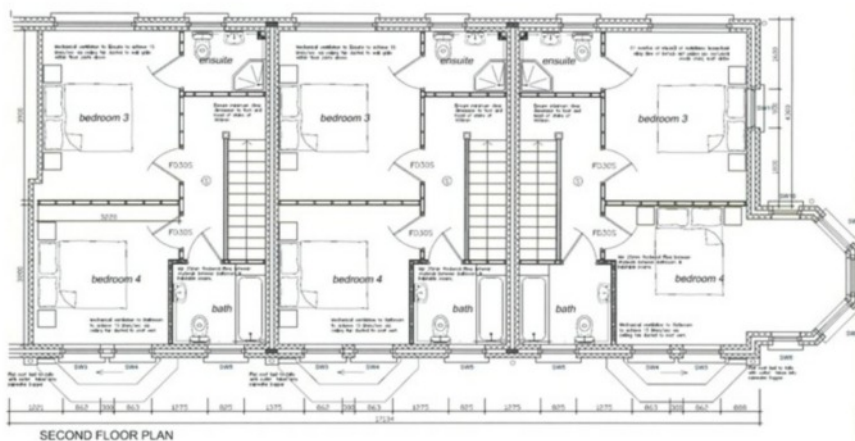
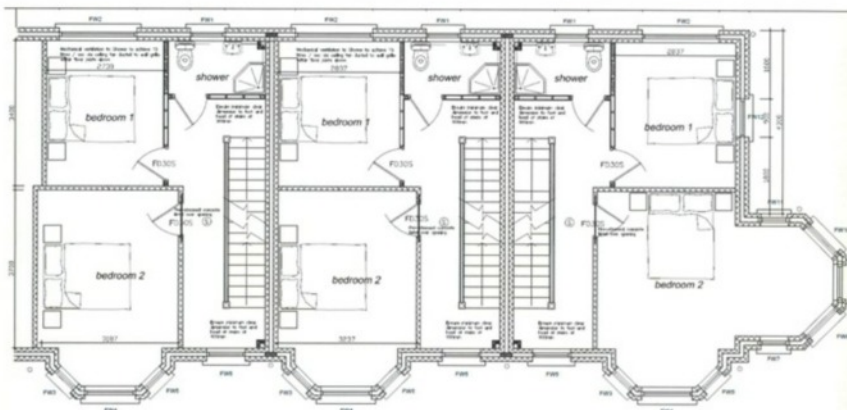
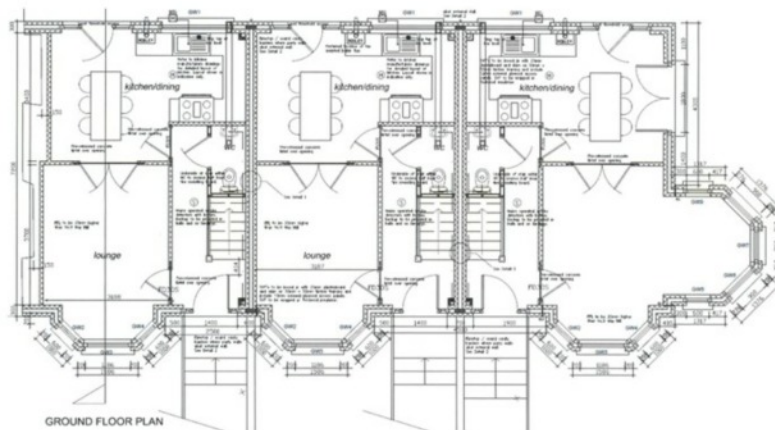
Front Garden Facing The TT Course

2 Allocated Parking Spaces To The Rear

Traditional Masonry Construction

The Property Comes With A 10 Year Warranty

Directions: Travelling through the traffic lights in Parliament Square on the TT Course, continue up the hill for a short distance where the properties can be found on the corner of Glen Elfin Road.



Whilst all particulars are believed to be correct, neither Property Wise Limited, or their clients guarantee their accuracy nor are they intended to form part of any contract. Floorplans are for illustrative purposes only, decorative finishes, fixtures, fittings and furnishings do not represent the current state of the property. Measurements are approximate and not to scale.