



**Crofton, 11 Brookfield Avenue
£199,950**



**A Well Presented Spacious 2 Bedroom Ground Floor Flat
With Private Garden and Garage
Sat in the Heart of Ramsey Close to the Bus Station, Shops
and All Local Amenities**

Good Sized Lounge with Amtico Flooring
Modern Kitchen Which Leads out To Rear Garden
Separate Large Dining Room With Views to The Rear Garden
Double Bedroom and a Further Large Single Bedroom
Modern Spacious Wet Room
Enclosed Private Rear Garden
Separate Garage

Ideal Investment Opportunity/First Time Buyer/Disability Friendly

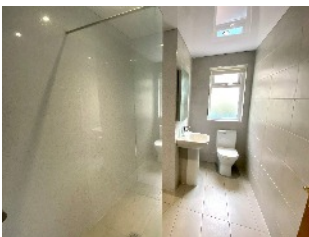
No Chain - Viewings Highly Recommended

Directions: From Parliament Square turn up Brookfield Avenue towards the Golf Club. Crofton can be found shortly afterwards on the left clearly marked by our For Sale Board

Rates: £ TBA by Douglas Rates Office

Services: All Mains Connected

Tenure: Leasehold



GROUND FLOOR
852 sq.ft. (79.2 sq.m.) approx.



TOTAL FLOOR AREA : 852 sq.ft. (79.2 sq.m.) approx.

For illustrative purposes only. Decorative finishes, fixtures, fittings and furnishings do not represent the current state of the property. Measurements are approximate. Not to scale.
Made with Metropix © 2023

Whilst all particulars are believed to be correct, neither Property Wise Limited, or their clients guarantee their accuracy nor are they intended to form part of any contract. Floorplans are for illustrative purposes only, decorative finishes, fixtures, fittings and furnishings do not represent the current state of the property. Measurements are approximate and not to scale.