



1A Princes Avenue Lane, Douglas

Asking Price £195,000

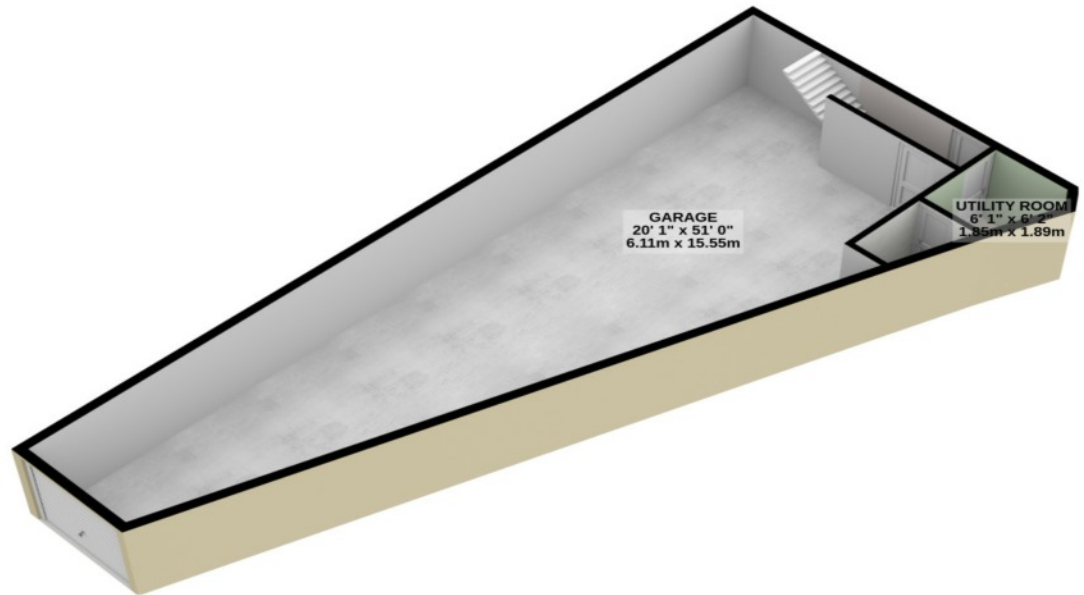


**Fabulous Renovation or Refurbishment Project
Located Close to Douglas Shops and Amenities
Property Currently Consists of a 51 ft Garage / Workshop with WC and
Utility Area
Unit Over Garage Which Could be Easily Converted in to a 1 Bedroom
Apartment .
Potential Sun Terrace Off the Apartment STPP (Flat Roof over Garage.**

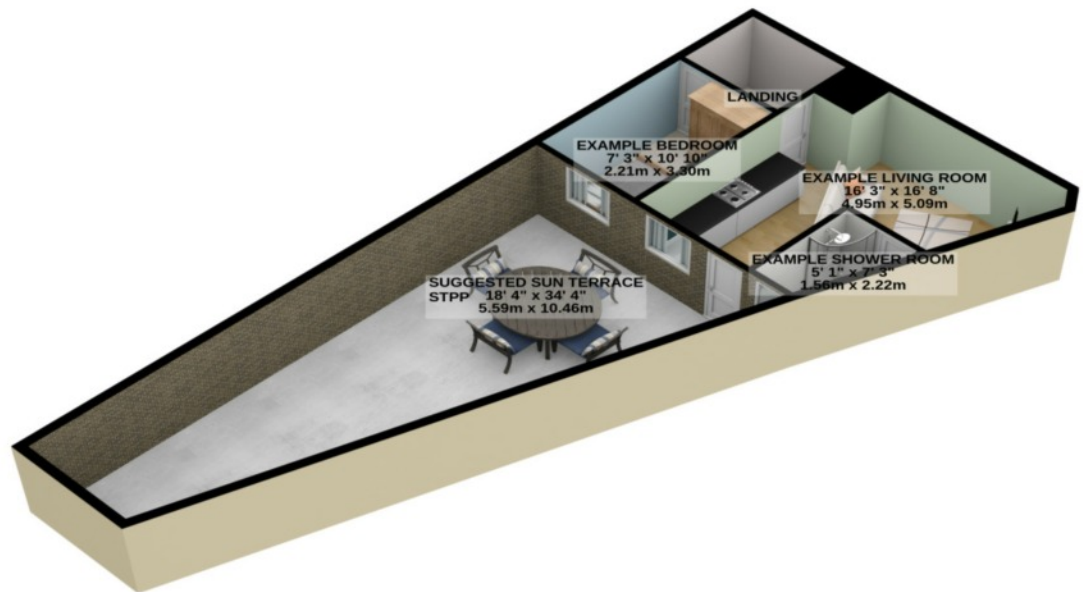
Cash Buyers Only

Directions: Travelling from Douglas Along the Promenade Turn Left on to Broadway Continue Through the Traffic Lights Taking First Turning on the Left in to Princes Avenue, Princes Lane is Located on the Right Hand Side where the property can be found Immediately on the Left.

GROUND FLOOR
801 sq.ft. (74.4 sq.m.) approx.



1ST FLOOR
792 sq.ft. (73.6 sq.m.) approx.



TOTAL FLOOR AREA : 1593 sq.ft. (148.0 sq.m.) approx.

For illustrative purposes only. Decorative finishes, fixtures, fittings and furnishings do not represent the current state of the property. Measurements are approximate. Not to scale.
Made with Metropix © 2023

Services - All Mains Services Connected

Inclusions

Rateable Value: £

Rates Payable: £