

**4 Auldyn Meadow Way**  
**£339,950**

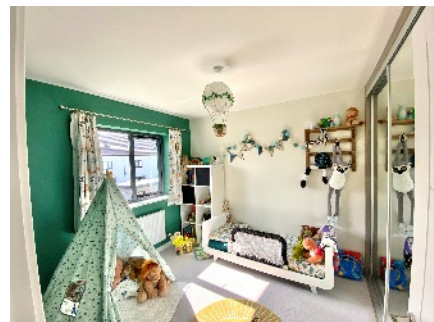
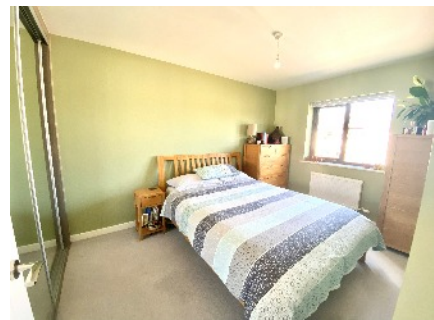


**An Immaculate 3 Bedroom Semi Detached Home**  
**With Integral Garage**  
**Sat In The New Semi-Rural Development**  
**Within Walking Distance of Ramsey and All Local Amenities**

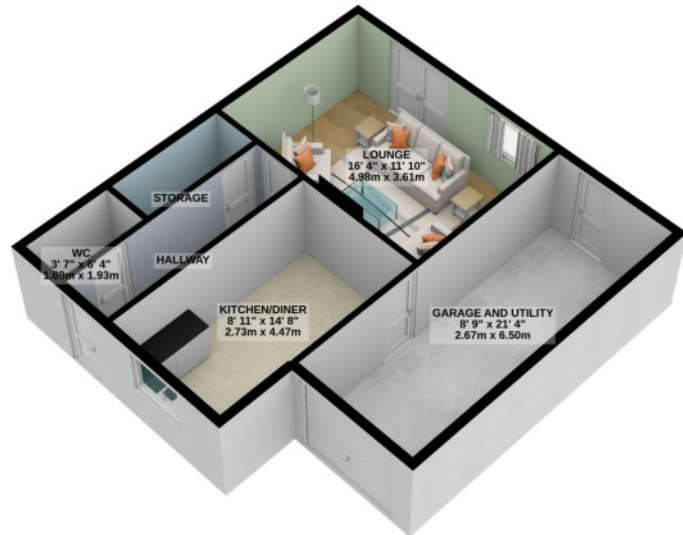
The Accommodation Comprises  
A Superb Modern Kitchen/Dining Room To The Front With Built In Electric Oven,  
Microwave, Dishwasher and Washer/Dryer  
Utility Area To The Rear of The Garage  
Downstairs WC  
Lounge Sunny Lounge With Double Doors to the Spacious Rear Garden and Patio  
Upstairs, The Master Bedroom Includes Fitted Wardrobes  
A Further Double Bedroom with Fitted Wardrobes, A Good Sized Single and  
A Modern Family Bathroom  
Airing Cupboard  
Gas Central Heating  
Off Road Parking for 2 Cars  
Integral Garage

**Directions: Driving Out of Ramsey Towards Peel Turn right into Gardners Lane and follow the road down to the bottom roundabout. Turn Right and then take the 2<sup>nd</sup> rights into Aldryn Meadow Way. Number 4 can be found on the left hand side.**

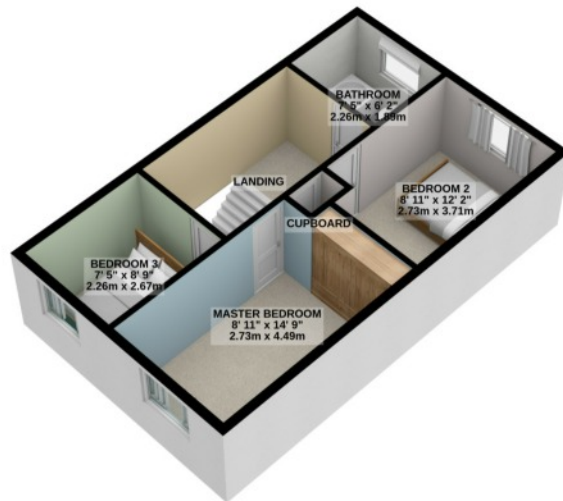
**Rates: £ TBA**



**GROUND FLOOR**  
620 sq.ft. (57.6 sq.m.) approx.



**1ST FLOOR**  
440 sq.ft. (40.9 sq.m.) approx.



**TOTAL FLOOR AREA : 1061 sq.ft. (98.5 sq.m.) approx.**

For illustrative purposes only. Decorative finishes, fixtures, fittings and furnishings do not represent the current state of the property. Measurements are approximate. Not to scale.  
Made with Metropix © 2023

Whilst all particulars are believed to be correct, neither Property Wise Limited, or their clients guarantee their accuracy nor are they intended to form part of any contract. Floorplans are for illustrative purposes only, decorative finishes, fixtures, fittings and furnishings do not represent the current state of the property. Measurements are approximate and not to scale.