

'The Croft'
Lheaney Road
Ramsey
£550,000



**Stunning Detached Property Recently Renovated and Finished to a Very High Standard with New 4 Car Garage at Rear.
Walking Distance to Ramsey Town Centre and all Amenities.**

Accommodation Comprises:-

Porch, Entrance Hall, Cloakroom WC

**Lounge, Dining Room Leading to Family Room,
Bespoke Kitchen Diner, Utility Room, Rear Porch.**

Three Double Bedrooms, Master En-suite,

Large Family Bathroom with Spa Bath,

Beautiful Rear Garden with Lawn and Patio Ideal for Entertaining,

4 Car Garage with Fitted Kitchen,

(Possible Annexe Conversion Subject to Relevant Planning Permission)

Additional Single Garage or Workshop.

Oil Fired Central Heating, uPVC Double Glazed.



Directions: Travelling from Ramsey on the Waterloo Road, turn right onto Queens Drive West, continue up the road onto Lheaney Road where the property can be found on the right hand side.

Rates: £2,020.24

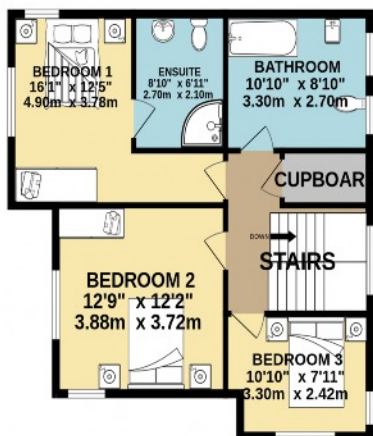
Tenure: Freehold

Services: All mains services and drainage

GROUND FLOOR
1618 sq.ft. (150.3 sq.m.) approx.



1ST FLOOR
648 sq.ft. (60.2 sq.m.) approx.



Whilst all particulars are believed to be correct, neither Property Wise Limited, or their clients guarantee their accuracy nor are they intended to form part of any contract. Floorplans are for illustrative purposes only, decorative finishes, fixtures, fittings and furnishings do not represent the current state of the property. Measurements are approximate and not to scale.