

**28 Carrick Park
Sulby
£449,950**



**A Well Presented Detached Bungalow In A Highly Sought After Quiet Location
Situated in Sulby Village & Close To All Local Amenities**

Accommodation Comprises:-

Spacious Entrance Porch

Large Lounge

Spacious Kitchen/Breakfast Room

Separate Utility Rooms

Good Sized Dining Room / 4th Double Bedroom

Master Bedroom with Spacious Ensuite

2 Further Double Bedrooms

Large Modern Family Bathroom with Separate Bath and Shower

Integral Double Garage and Off Road Parking

Mature and Maintained Gardens To The Front And Rear

Double Glazing Throughout / Oil Fired Central Heating

NO ONWARD CHAIN

Directions :- On entering Sulby from Ramsey turn left after The Ginger Hall into Carrick Park. Drive straight ahead and then bear round to the right where the property will be found on the right hand side.

RV : TBA

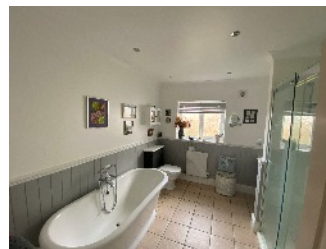
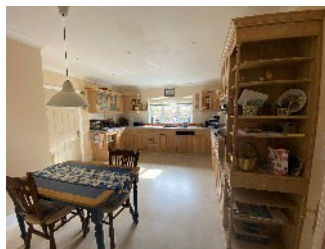
Rates Payable : TBA



TOTAL FLOOR AREA : 1968 sq.ft. (182.8 sq.m.) approx.

For illustrative purposes only. Decorative finishes, fixtures, fittings and furnishings do not represent the current state of the property. Measurements are approximate. Not to scale.

Made with Metropix © 2023



Whilst all particulars are believed to be correct, neither Property Wise Limited, or their clients guarantee their accuracy nor are they intended to form part of any contract. Floorplans are for illustrative purposes only, decorative finishes, fixtures, fittings and furnishings do not represent the current state of the property. Measurements are approximate and not to scale.