



77 Derby Road, Douglas

Asking Price £795,000



Fully Renovated and Totally Refurbished Executive End Terraced House (re roofed, rendered / plastered, rewired, re-plumbed).

Situated in a Convenient and Popular Location Close to Shops and Amenities With The Town Centre Only A Ten Minute Walk Away

Beautifully Fitted Modern Kitchen

Sitting / Dining Room, TV Lounge

Top Lounge / Cinema Room / Entertainment Room (Offering Amazing Panoramic Views)

Home Office

4 Double Bedrooms (All with Stunning Luxury En-suites)

Laundry Room (with Wash Basin and WC) plus Additional WC / Cloakroom

The Property Benefits from Under Floor Heating to First 2 Floors

New Sliding Sash uPVC Double Glazed Windows Throughout

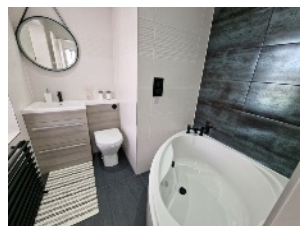
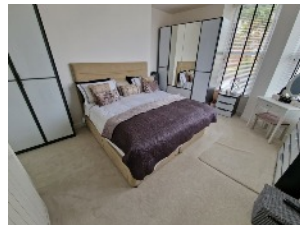
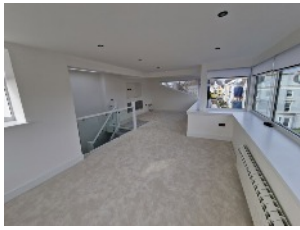
Private Front Lawned Garden

Balcony / Sun Terrace From First Floor (STPP)

Off Road Parking for 3 Vehicles

******Viewings Highly Recommended******

Directions: Travelling North along Douglas Promenade, turn left at the Villa Marina onto Broadway. Continue along Broadway for approximately 250 yards taking first left onto Derby Road where the property can be found at the very top on the left hand side easily identifiable by our For Sale Board



LOWER GROUND FLOOR
471 sq.ft. (43.8 sq.m.) approx.



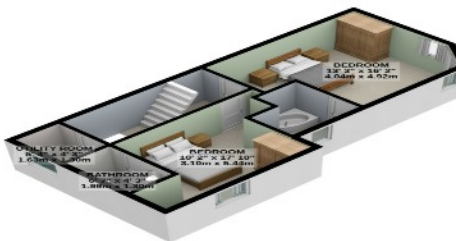
GROUND FLOOR
530 sq.ft. (49.2 sq.m.) approx.



1ST FLOOR
490 sq.ft. (45.5 sq.m.) approx.



2ND FLOOR
478 sq.ft. (44.4 sq.m.) approx.



3RD FLOOR
359 sq.ft. (33.4 sq.m.) approx.



TOTAL FLOOR AREA : 2328 sq.ft. (216.3 sq.m.) approx.

For illustrative purposes only. Decorative finishes, fixtures, fittings and furnishings do not represent the current state of the property. Measurements are approximate. Not to scale. Made with Metropax © 2025

Whilst all particulars are believed to be correct, neither Property Wise Limited, or their clients guarantee their accuracy nor are they intended to form part of any contract. Floorplans are for illustrative purposes only, decorative finishes, fixtures, fittings and furnishings do not represent the current state of the property. Measurements are approximate and not to scale.