

113 Wybourn View, Onchan

Asking Price £369,950



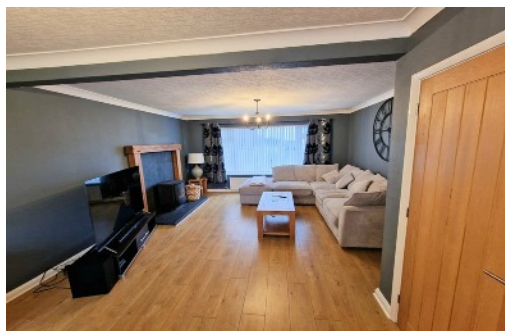
**A Fabulous Well Presented Detached Dormer Bungalow
Situated on a Generous Plot and a Quiet Cul de Sac Position
Located in a Popular Location in Onchan close to Shops, Schools & Amenities
Deceptively Large Lounge Dining Room
Lovely Modern Fitted Kitchen
3 Extremely Generous Double Bedrooms
Modern Family Bathroom (Ground Floor) and Additional Shower Room (First Floor)
uPVC Double Glazing Throughout
Gas Fired Central Heating
Private Good Sized Rear Garden
Single Garage plus Driveway Parking

‘Viewings Highly Recommended’**

Directions: Travelling out of Douglas up Summerhill, turn left at the top at mini roundabout then take the second right into Wybourn Drive Continuing in to the top of Wybourn Drive and following the road around to the right, taking 2nd right in to Wybourn View. The Property is Located on the Left Hand Side, Easily Identified by our For Sale Board.

Rateable Value: £TBC

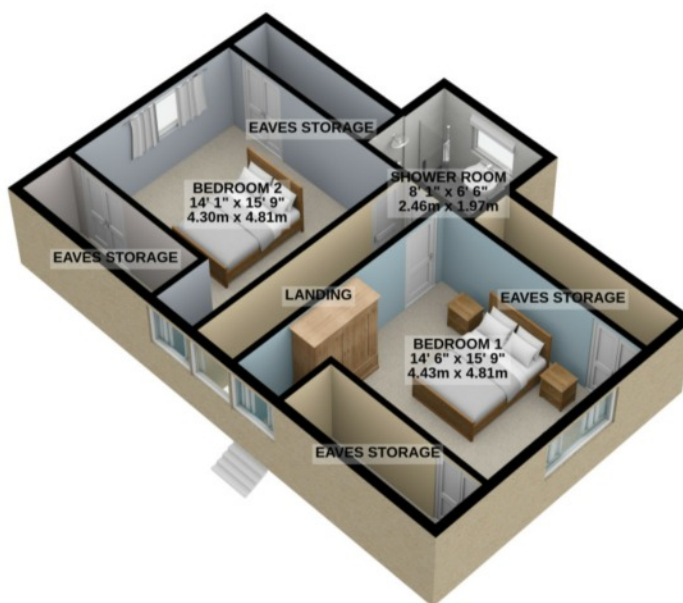
Rates Payable: £TBC incl water rates)



GROUND FLOOR
939 sq.ft. (87.2 sq.m.) approx.



1ST FLOOR
623 sq.ft. (57.9 sq.m.) approx.



TOTAL FLOOR AREA : 1562 sq.ft. (145.1 sq.m.) approx.

For illustrative purposes only. Decorative finishes, fixtures, fittings and furnishings do not represent the current state of the property. Measurements are approximate. Not to scale.
Made with Metropix © 2022

Whilst all particulars are believed to be correct, neither Property Wise Limited or their clients guarantee their accuracy nor are they intended to form part of any contract.. Floorplans are only for illustrative purposes only, decorative finishes, fixtures, fittings and furnishings do not represent the current state of the property. Measurements are approximate and not to scale.