

**17 Rectory Court
Ramsey
£69,500**



**A Purpose Built 1 Bedroom Studio Apartment
Sat In The Heart of Ramsey Town Centre**

**The Studio is Situated on the First Floor, The Entrance is at The Side of The HSBC
Bank**

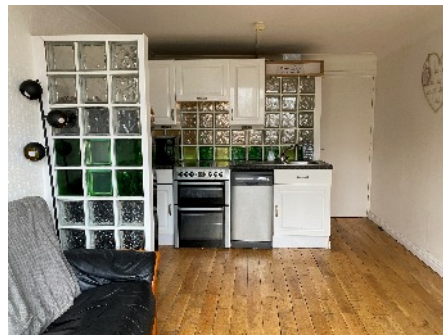
**The Accommodation Comprises:-
Hallway Leading into Living Room / Kitchenette overlooking St Pauls Church
Bedroom That Leads into a Good sized Shower Room**

Active Management Company

Ideal Investment Property

Directions : The entrance to Rectory Court can be found in St Pauls Square . There is a Lane by the side of the HSBC Bank and the entrance can be clearly seen

Rates : TBA



GROUND FLOOR
300 sq.ft. (27.9 sq.m.) approx.



TOTAL FLOOR AREA : 300 sq.ft. (27.9 sq.m.) approx.

For illustrative purposes only. Decorative finishes, fixtures, fittings and furnishings do not represent the current state of the property. Measurements are approximate. Not to scale.
Made with Metropix © 2023

Whilst all particulars are believed to be correct, neither Property Wise Limited, or their clients guarantee their accuracy nor are they intended to form part of any contract. Floorplans are for illustrative purposes only, decorative finishes, fixtures, fittings and furnishings do not represent the current state of the property. Measurements are approximate and not to scale.