



**“Windy Hill,”
Thornhill Park, Ramsey
£495,000**



**A Delightful Well Presented 3 Bed Detached True Bungalow
Set on a large and Mature Plot Within a Sought after cul-de-sac Location Close to
Ramsey Town Centre, Mooragh Park and the Beach Beautiful Views over Protected
Countryside to the Rear**

The Accommodation Comprises:-

Front Porch That Leads into a Light, Spacious and Welcoming Hallway with Solid Wood Flooring

The Large Light Lounge has a Lovely Bay Window and Boasts a Good Size Naturally Lit Open Plan Dining room with Rear Double Doors out to the Rear Garden.

Modern Kitchen with Neff Double Oven and Hob, 2 Roof Velux Windows

Separate Utility Room that has access to an Integral Garage on one side and a part brick Spacious Conservatory to the other side.

Master Bedroom with Modern En-suite Shower Room and a Further Double Bedroom with Jack and Gill access into the Family Bathroom Both of these rooms have High Quality Fitted Wardrobes

Further Large Single Bedroom / Study

Integral Garage

Oil FCH with a New Boiler (12 Months Old)

Upvc Throughout

Extremely Efficient Solar Panel is linked to the Megaflo Hot Water System

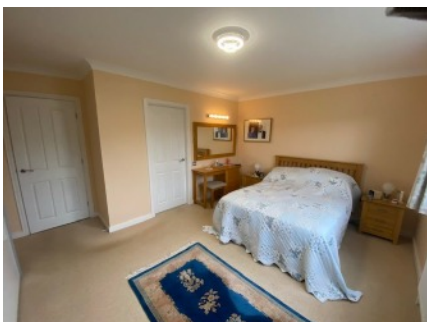
Off Road Parking

Private and Established Gardens Enjoying a High Degree of Privacy and Several Types of Different Fruit Trees.

Directions: From the traffic lights in Parliament Square, drive north along Bowring Road and continue to the top of the hill. Travel past the Grove Museum then take the next left into Thornhill Park. Windy Hill can be found at the Top

Inclusions: to be confirmed

Services: All Mains Services Connected



GROUND FLOOR
1528 sq.ft. (142.0 sq.m.) approx.



TOTAL FLOOR AREA : 1528 sq.ft. (142.0 sq.m.) approx.

For illustrative purposes only. Decorative finishes, fixtures, fittings and furnishings do not represent the current state of the property. Measurements are approximate. Not to scale.

Made with Metropix © 2023

Whilst all particulars are believed to be correct, neither Property Wise Limited, or their clients guarantee their accuracy nor are they intended to form part of any contract. Floorplans are for illustrative purposes only, decorative finishes, fixtures, fittings and furnishings do not represent the current state of the property. Measurements are approximate and not to scale.