



**11 Close Cronk,  
Ballatessan Meadow, Peel  
£575,000**



**A Modern Executive Detached 4 Bed Home With Views Out To Peel Hill, Situated on the Outskirts of Peel Within Walking Distance to All of Peel Local Amenities.**

Entrance Into Light Reception Hall with Down Stairs WC and Storage Cupboard

Large Bright Lounge With Doors Into Spacious Modern Kitchen Diner with Built In appliances and Doors Out Out To Rear Garden

Utility Room Off The Kitchen with Access into Garage Upstairs Boast Wide Landing Space with Double Airing Cupboard

Master with En Suite Bathroom, Double Sink and Shower

Second Double With En suite Shower Room and

Two Further Double Bedrooms

Large Family Bathroom with Bath and Shower

Fully Boarded Loft with Ladders and Light

Rear Garden, Front Garden, Driveway and Integral Garage Gas Fired Central Heating, Upvc Double Glazing Throughout

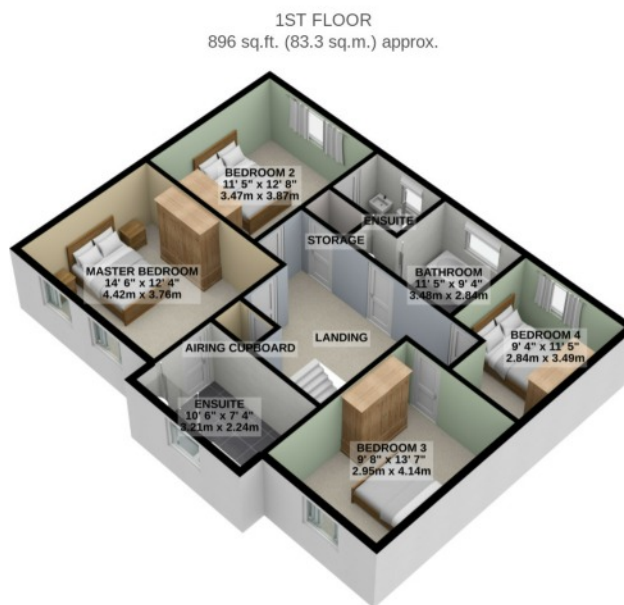
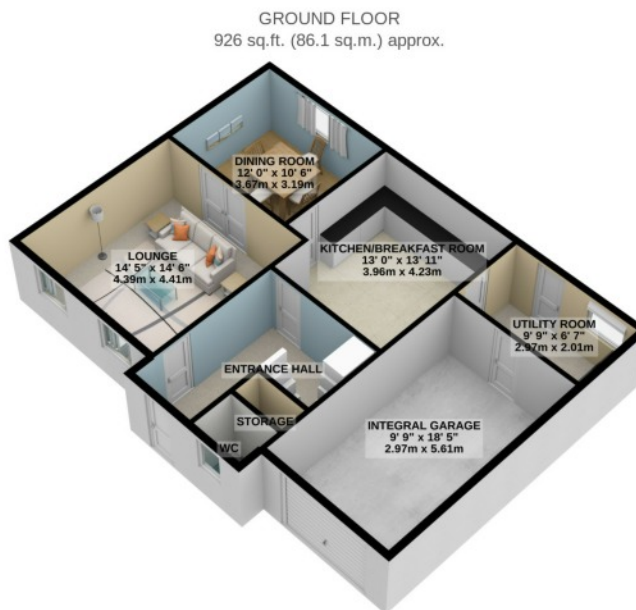
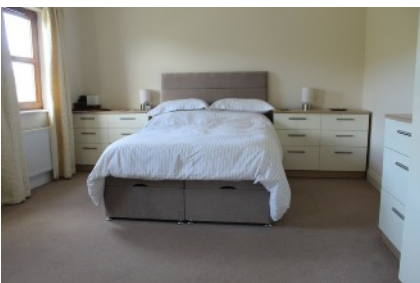
**Directions: Heading Out of Peel Towards To Patrick, On the Glenfaba Road Only a Short Distance Along Ballatessan Meadow can Be Found, Turn Into Ballatessan and Then take a Left Into Close Cronk, Follow The Road Round where the Property Can be Found On the Left Hand Side.**

**Inclusions: to be confirmed**

**Services: All Mains Services Connected**

**Rates Payable:£TBC**

**Rateable Value:£TBC**



**TOTAL FLOOR AREA : 1823 sq.ft. (169.3 sq.m.) approx.**

For illustrative purposes only. Decorative finishes, fixtures, fittings and furnishings do not represent the current state of the property. Measurements are approximate. Not to scale. Made with Metropix © 2022

Whilst all particulars are believed to be correct, neither Property Wise Limited, or their clients guarantee their accuracy nor are they intended to form part of any contract. Floorplans are for illustrative purposes only, decorative finishes, fixtures, fittings and furnishings do not represent the current state of the property. Measurements are approximate and not to scale.