



**12 Close Cubbon
Peel
£399,950**



**A Detached 3 Bed True Bungalow Sitting in A Large Corner Plot,
Located at The End of The Quiet Cul De Sac, Within Easy Walking
Distance to All Of Peels Local Amenities**

Entrance Into Hallway with Storage Cupboards

Large Open Plan Dual Aspect Kitchen/Diner with Electric Oven, Fridge
and Dishwasher with Windows and Double Doors Out To Rear Garden

Good Sized Lounge, With Views To Peel Castle, Peel Hill and Sea
Fireplace Could be Reinstated

Separate Utility Room with New Gas Boiler

Master Bedroom with Built In Wardrobes and En-suite shower Room

2 Further Double Bedrooms one with Built In Wardrobes

Fully Tiled Family Bathroom

Fully Boarded Loft with Electric and Ladder

Double Garage, Off Road Parking and Large Rear Garden

Access to the Lane at The Rear

Bottle Gas, and most Windows Upvc Double Glazed

No Onward Chain

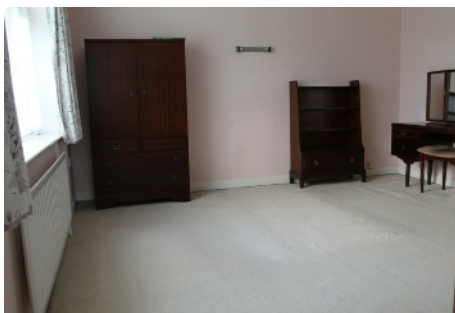
Directions: Entering Peel on the A1, take a right on Albany Road. At the stop sign go straight across onto Church Street, bear right onto the A4 (Peveril Road). Take the first available right onto Derby Drive, then a left onto Close Cubbon, No.12 can be found at the end of the Cul De Sac, in the Corner clearly identified by our for sale board.

Inclusions: to be confirmed

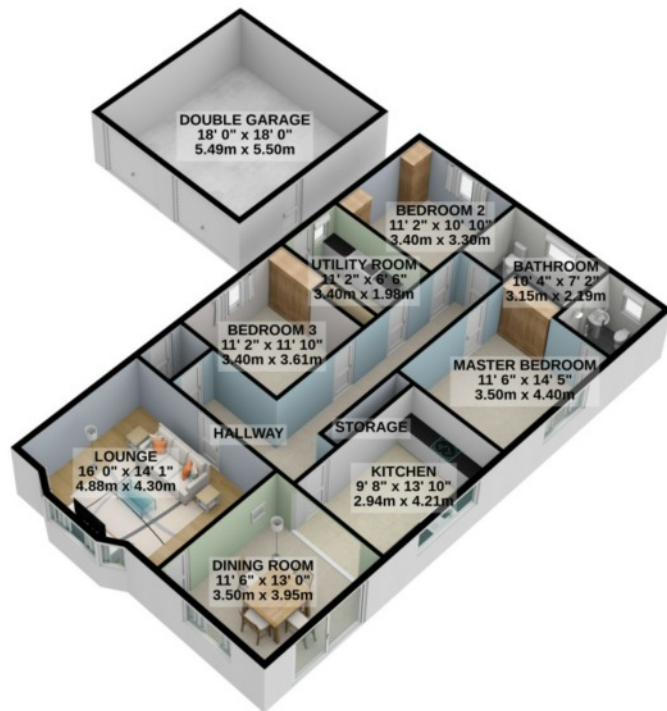
Services: All Mains Services Connected

Rates Payable; £TBC

Rateable Value; £TBC



GROUND FLOOR
1624 sq.ft. (150.9 sq.m.) approx.



TOTAL FLOOR AREA : 1624 sq.ft. (150.9 sq.m.) approx.

For illustrative purposes only. Decorative finishes, fixtures, fittings and furnishings do not represent the current state of the property. Measurements are approximate. Not to scale.
Made with Metropix © 2022

Whilst all particulars are believed to be correct, neither Property Wise Limited, or their clients guarantee their accuracy nor are they intended to form part of any contract. Floorplans are for illustrative purposes only, decorative finishes, fixtures, fittings and furnishings do not represent the current state of the property. Measurements are approximate and not to scale.