



**Glenmoar, The Links
Peel
£575,000**



A Detached 3 Bed Potton Built Dormer Bungalow Situated In a Quiet Development Close To Schools, Shops and Bus Routes

Large Entrance Hallway
Storage Cupboard and Separate WC
Lounge with Wood Burner
Large Kitchen/Diner With Built In Electric AGA
Utility Room and Storage Cupboard
Double Integral Garage with Central Vacuum System
Master Bedroom with Walk In Wardrobes and En - Suite Bathroom
Large Double Bedroom and A good Sized Single Bedroom
Shower Room and WC
2 Gardens Areas And a Patio Area

****NO ONWARD CHAIN****

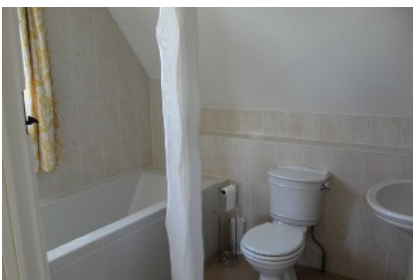
Directions: Travelling Into Peel, Passed The QE2 High School Just Passed The Football Ground turn Left Onto The Links. The Property Can be Located On the Right Hand side.

Inclusions: to be confirmed

Services: All Mains Services Connected

Rates Payable: £TBC

Rateable Value: £TBC



1ST FLOOR
644 sq.ft. (59.9 sq.m.) approx.



TOTAL FLOOR AREA : 1876 sq.ft. (174.3 sq.m.) approx.

For illustrative purposes only. Decorative finishes, fixtures, fittings and furnishings do not represent the current state of the property. Measurements are approximate. Not to scale.
Made with Metropix © 2021

Whilst all particulars are believed to be correct, neither Property Wise Limited, or their clients guarantee their accuracy nor are they intended to form part of any contract. Floorplans are for illustrative purposes only, decorative finishes, fixtures, fittings and furnishings do not represent the current state of the property. Measurements are approximate and not to scale.