



**3 Ballatessan Meadow
Peel
£425,000**



A 4 Bed Detached Family Home Situated In A Sought After Residential location, Within walking Distance to All Peels Local Amenities

Entrance Hall With Downstairs WC and Stairs

Bright Spacious Lounge

Dining Room Leading into

Large Kitchen With Under Stairs Storage Cupboard and Built In Appliances

Utility Room

Sunroom with Tiled Floor

Large Integral Garage

Upstairs Boasts:- Master Bedroom with En-Suite Shower Room

2 Further Double Bedrooms and A Single Bedroom

Modern White Suite Family Bathroom With Shower Over

A Beautifully Maintained Garden with Paths Leading Through the Mature Shrubs, Flowers and Fruit Plants

Off Road Parking for Two Vehicles

Gas Fired Central Heating and Upvc Double Glazing Throughout

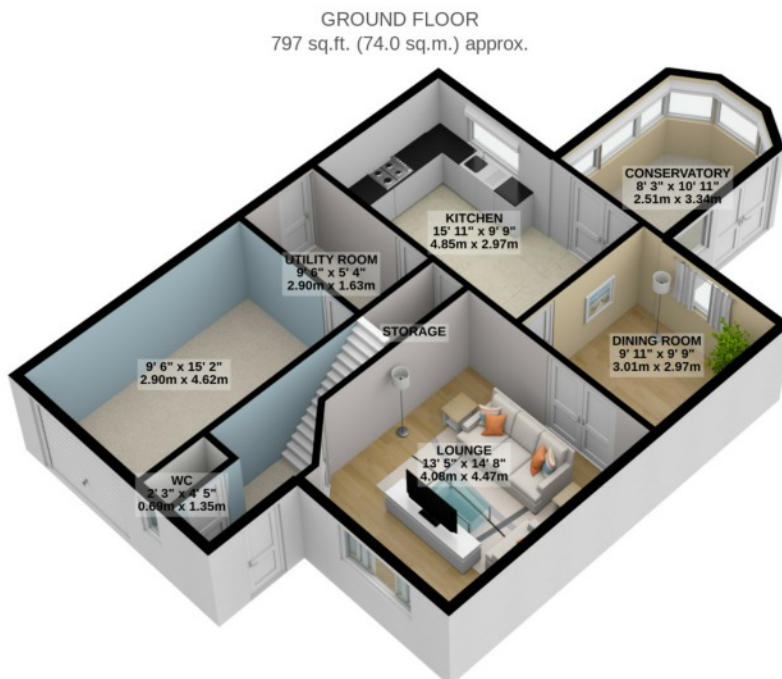
Directions: Travelling Into Peel Passed The High School, at the junction Turn Left Onto queens Drive, Go Right at The Round About Follow Queens Drive Onto Heathfield Drive, Turn Left Onto Patrick Road, and Follow the Road. Just Before Castle View Nursing home Turn Left Onto Ballatessan Meadow and the Property Can be located on the Left Hand Side

Inclusions: to be confirmed

Services: All Mains Services Connected

Rateable Value: £TBC

Rates Payable:£TBC



TOTAL FLOOR AREA : 1405 sq.ft. (130.5 sq.m.) approx.

For illustrative purposes only. Decorative finishes, fixtures, fittings and furnishings do not represent the current state of the property. Measurements are approximate. Not to scale.
Made with Metropix © 2021

Whilst all particulars are believed to be correct, neither Property Wise Limited, or their clients guarantee their accuracy nor are they intended to form part of any contract. Floorplans are for illustrative purposes only, decorative finishes, fixtures, fittings and furnishings do not represent the current state of the property. Measurements are approximate and not to scale.