



**12 Saddle Mews  
Douglas**

**Asking Price £150,000**



**Stunning First Floor Floor Over 50's Apartment  
Situated in a Sought After Location Close to Douglas & All  
Amenities**

**Immaculate Condition Throughout**

**Large Lounge with Feature Wall and Multifunction Fireplace**

**Lovely Modern Fitted Kitchen**

**1 Double Bedroom with Fitted Wardrobes and Drawer Units**

**Beautiful Recently Fitted Shower Room with Under Floor Heating**

**Viewing's Highly Recommended**

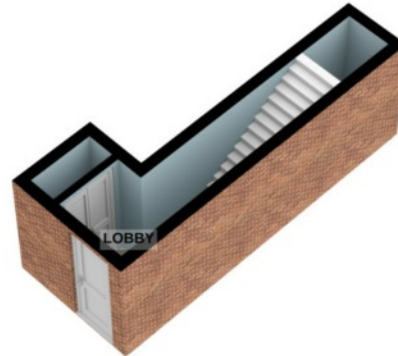
**Directions:** Leave Douglas centre via the Quarterbridge roundabout and turn left onto the new Castletown Road. At the next set of traffic lights turn left where the development will be found after a short distance on the left hand side.

Rates: £TBC (inc Water Rates)

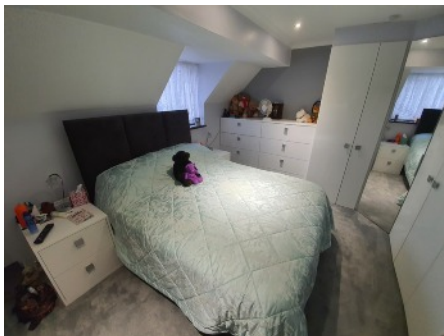
Rates Payable: £TBC

Management Fees: £101 pcm

GROUND FLOOR  
67 sq.ft. (6.2 sq.m.) approx.



FIRST FLOOR  
561 sq.ft. (52.1 sq.m.) approx.



TOTAL FLOOR AREA : 627 sq.ft. (58.3 sq.m.) approx.

For illustrative purposes only. Decorative finishes, fixtures, fittings and furnishings do not represent the current state of the property. Measurements are approximate. Not to scale.  
Made with Metropix © 2020

Whilst all particulars are believed to be correct, neither Property Wise Limited, or their clients guarantee their accuracy nor are they intended to form part of any contract.. Floorplans are only for illustrative purposes only, decorative finishes, fixtures, fittings and furnishings do not represent the current state of the property. Measurements are approximate and not to scale.