



29 Auburn Road, Onchan

Asking Price £279,950



A Spacious Semi Detached Family House in a Central Location
Conveniently Situated Close to Schools, Shops and Amenities
The Property is Presented in Excellent Condition Throughout

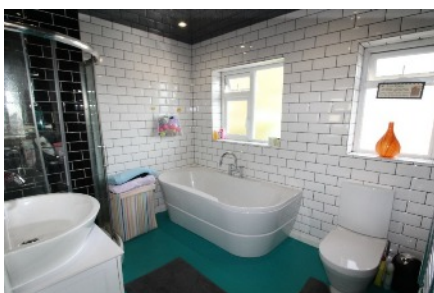
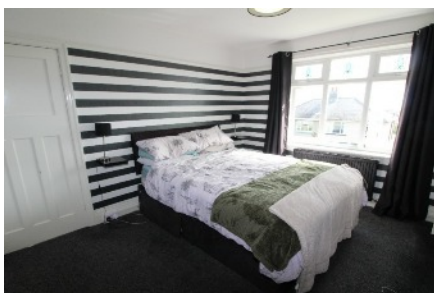
Accommodation Comprises:

- Good Sized Lounge with Attractive Bay Window
- Lovely Open Plan Modern Fitted Dining Kitchen
- Separate Utility Room and Downstairs WC
- 3 Bedrooms (2 Good Sized Doubles and 1 Single)
- Stunning Modern Family Bathroom
- u-PVC Double Glazed
- Oil Fired Central Heating System
- Single Garage with Drive Parking for 1-2 Cars
- Rear Garden Mainly Laid to Lawn with Mature Shrubs

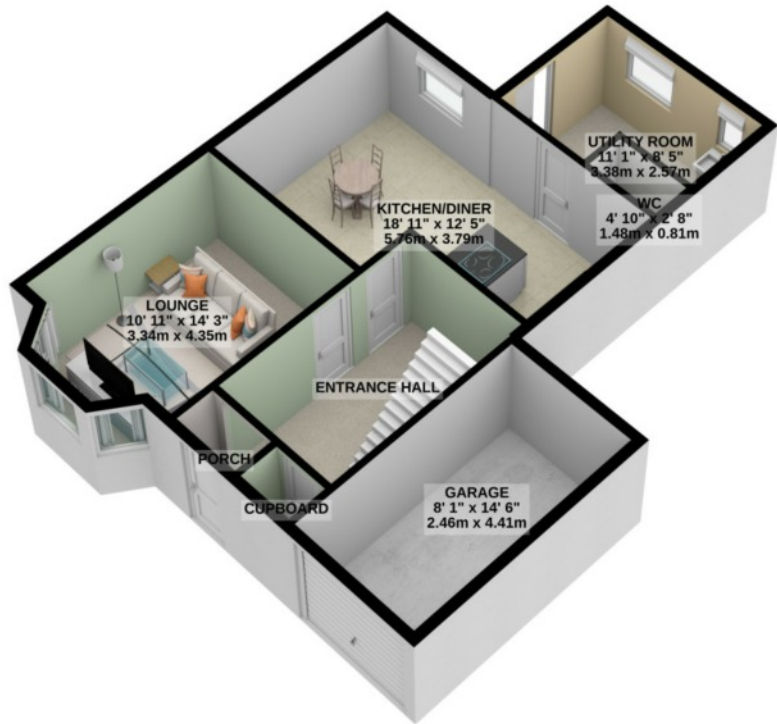
“Viewing’s Highly Recommended”

Directions : Travelling along Douglas Promenade proceed up Summer Hill until reaching the top then turn right at mini roundabout heading towards Onchan Village, turn right at the Post Office onto Kelvin Road, at the bottom of the hill turn right onto Auburn Road where No. 29 can be located on the right hand side of the Cul De Sac clearly identified by our for sale board

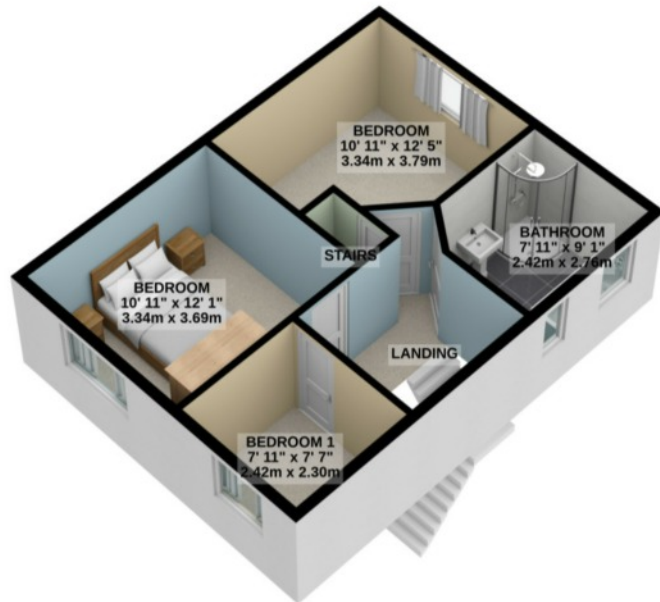
Rateable Value :£144 **Rates Payable**: £1142.64 (inc Water Rates) **Tenure** : Freehold



GROUND FLOOR
687 sq.ft. (63.8 sq.m.) approx.



1ST FLOOR
463 sq.ft. (43.1 sq.m.) approx.



TOTAL FLOOR AREA : 1150 sq.ft. (106.8 sq.m.) approx.

For illustrative purposes only. Decorative finishes, fixtures, fittings and furnishings do not represent the current state of the property. Measurements are approximate. Not to scale. Made with Metropix © 2020