



21 Princes Road, Douglas
Asking Price £275,000



Lovely Mid Terraced Family House Presented in Immaculate Condition Throughout
Situated in a Central Location Close to Schools, Shops and Conveniences

Accommodate Comprises of:-

Fully Fitted Kitchen

Large Open Plan Lounge Diner

Basement Level Family Room and Utility Area

3 Generous Sized Bedrooms

Family Bathroom with Separate WC

Integral Single Garage and off Road Parking for 3 Cars

Sunny Low Maintenance Enclosed Rear Yard

U-PVC Double Glazed Throughout

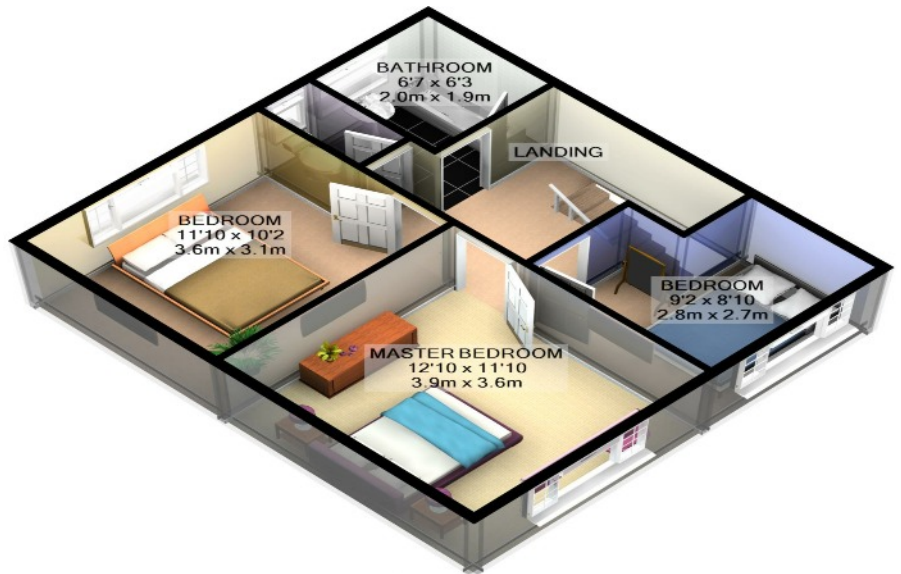
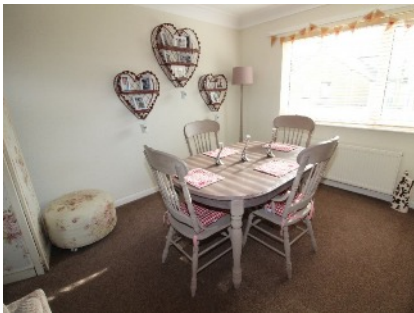
Gas Fired Central Heating

Vacant Possession on Completion

No Onward Chain

Directions: Travelling along Douglas Promenade turn left at the lights onto Broadway take a right at the next set of lights onto Victoria Road take the 5th left turn into Princes Road where the property can be found on the left hand side clearly identified by our For Sale Board.

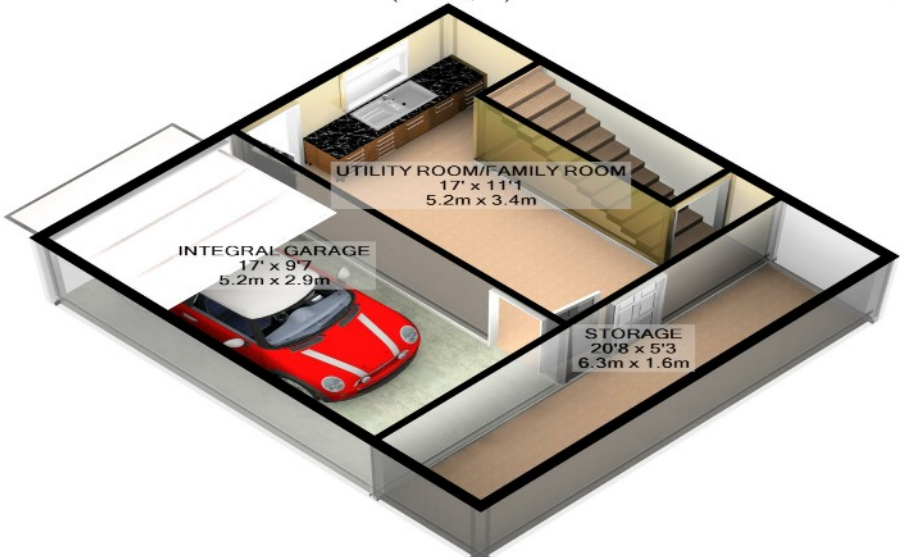
Rateable value £TBA Rates payable £TBA approx



1ST FLOOR
APPROX. FLOOR
AREA 476 SQ.FT.
(44.2 SQ.M.)



GROUND FLOOR
APPROX. FLOOR
AREA 476 SQ.FT.
(44.2 SQ.M.)



BASEMENT LEVEL
APPROX. FLOOR
AREA 459 SQ.FT.
(42.6 SQ.M.)

TOTAL APPROX. FLOOR AREA 1411 SQ.FT. (131.1 SQ.M.)

For illustrative purposes only. Decorative finishes, fixtures, fittings and furnishings do not represent the current state of the property. Measurements are approximate. Not to scale. Made with Metropix ©2020