



**2 Cairn Drive, Slieau Whallian View
Peel
£349,950**



**A 4 Bed Modern Detached House
In a Sought After Location Within Walking Distance of All Of Peels
Local Amenities**

Entrance Hallway With Downstairs WC

Large Bright Lounge

Open Plan Kitchen/Diner With Tiled Floor and Built in Siemens

Electric Hob and Oven, Fridge Freezer and Dishwasher

Utility Room

Master Bedroom With En-suite Shower Room and Built In Wardrobe

2 Further Large Double Bedrooms with Built in wardrobes

Large Single with Built In Wardrobe

Modern Family Bathroom

Accessible Loft Space with Electric

Outside Rear Garden with Decked areas and Patio

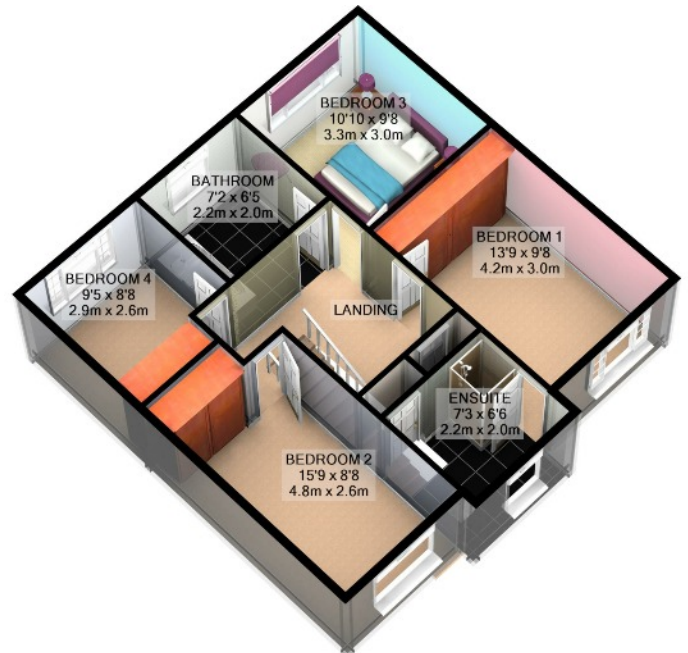
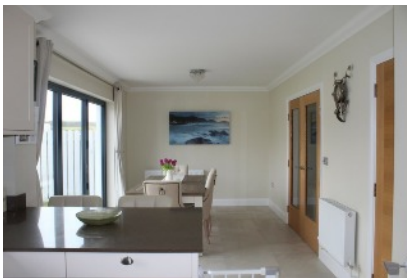
Drive and Integral Garage

Gas Fired Central Heating and Upvc Double Glazing

Directions: Travelling Up Derby Road in Peel passing Shoprite and the swimming pool on the left, Keep following the road straight up towards the Highwayman pub at the roundabout take a right and follow the road round keeping left past Rockmount Bungalows, keep following the road round and Cairn Drive is the second turning to your left. The Property Can be Identified by Our For Sale Board.

Rateable value: £184 **Rates payable:** £1507.12 (Inc Water Rates)

Inclusions: to be confirmed **Services:** All Mains Services Connected



1ST FLOOR
APPROX. FLOOR
AREA 657 SQ.FT.
(61.1 SQ.M.)



GROUND FLOOR
APPROX. FLOOR
AREA 790 SQ.FT.
(73.4 SQ.M.)

TOTAL APPROX. FLOOR AREA 1447 SQ.FT. (134.4 SQ.M.)

For illustrative purposes only. Decorative finishes, fixtures, fittings and furnishings do not represent the current state of the property. Measurements are approximate. Not to scale
Made with Metropix ©2020