



**Woodside
23 Greeba Avenue, Glen Vine
£410,000**



An Extended Spacious 4 Bed Detached Traditional Dormer Bungalow Situated In A Quiet Residential Area Centrally Located To Douglas, Castletown and Peel

Welcoming Entrance Hall with Stairs to First Floor

Under Stairs Storage and WC

Modern Open Plan Kitchen, Dining/Breakfast Area,

Built In Bosch Oven, Hob and Dishwasher

Utility Room Plumbed for Washing Machine

With access Out Into the Garden

Lounge With Feature Fire Place and Wood Burner

Large Dining Room

2 Double Bedrooms

Master Bedroom with En-Suite Shower room

A Further Double Bedroom

Family Bathroom With Bath, Sink and WC

Integral Garage, Paved Driveway

Large Sunny Front and Rear Lawned Gardens

Gated Entrance Into Driveway

Oil Fired Central Heating, UPVC Glazing Throughout

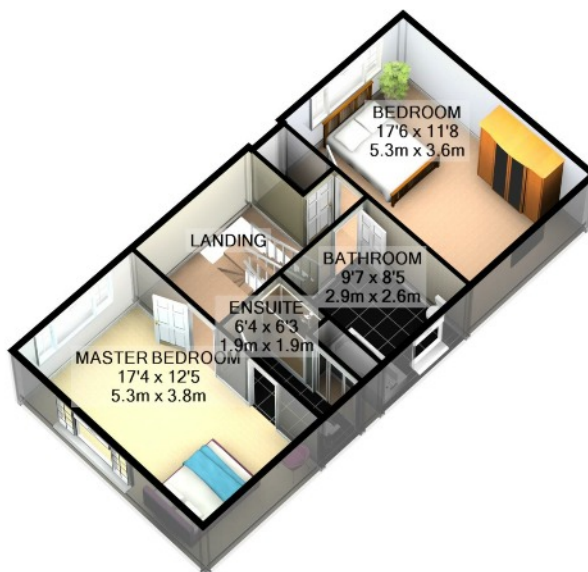
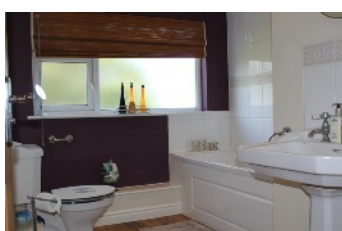
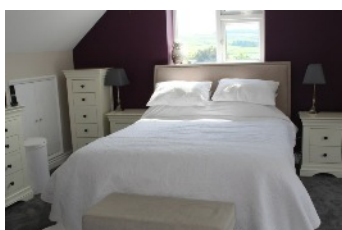
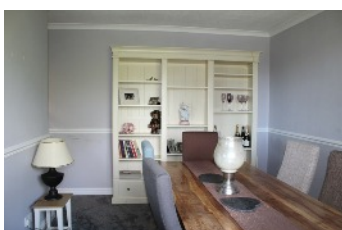
NO ONWARD CHAIN

Directions: Travelling From Peel Into Glen Vine Turn Left At The Second Set of Traffic Lights Onto Ballagarey Road, Take The First Left Into Greeba Avenue, The Property Can Be Found A Short Distance Along on The Left Hand Side. A Wooden Entrance Gate Leads Into The Property

Rateable value: £ Rates payable: £ (Inc Water Rates)

Inclusions: to be confirmed

Services: All Mains Services Connected



1ST FLOOR
APPROX. FLOOR
AREA 651 SQ.FT.
(60.5 SQ.M.)



GROUND FLOOR
APPROX. FLOOR
AREA 1173 SQ.FT.
(109.0 SQ.M.)

TOTAL APPROX. FLOOR AREA 1825 SQ.FT. (169.5 SQ.M.)

For illustrative purposes only. Decorative finishes, fixtures, fittings and furnishings do not represent the current state of the property. Measurements are approximate. Not to scale
Made with Metropix ©2019

Whilst all particulars are believed to be correct, neither Property Wise Limited, or their clients guarantee their accuracy nor are they intended to form part of any contract. Floorplans are for illustrative purposes only, decorative finishes, fixtures, fittings and furnishings do not represent the current state of the property. Measurements are approximate and not to scale.